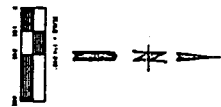
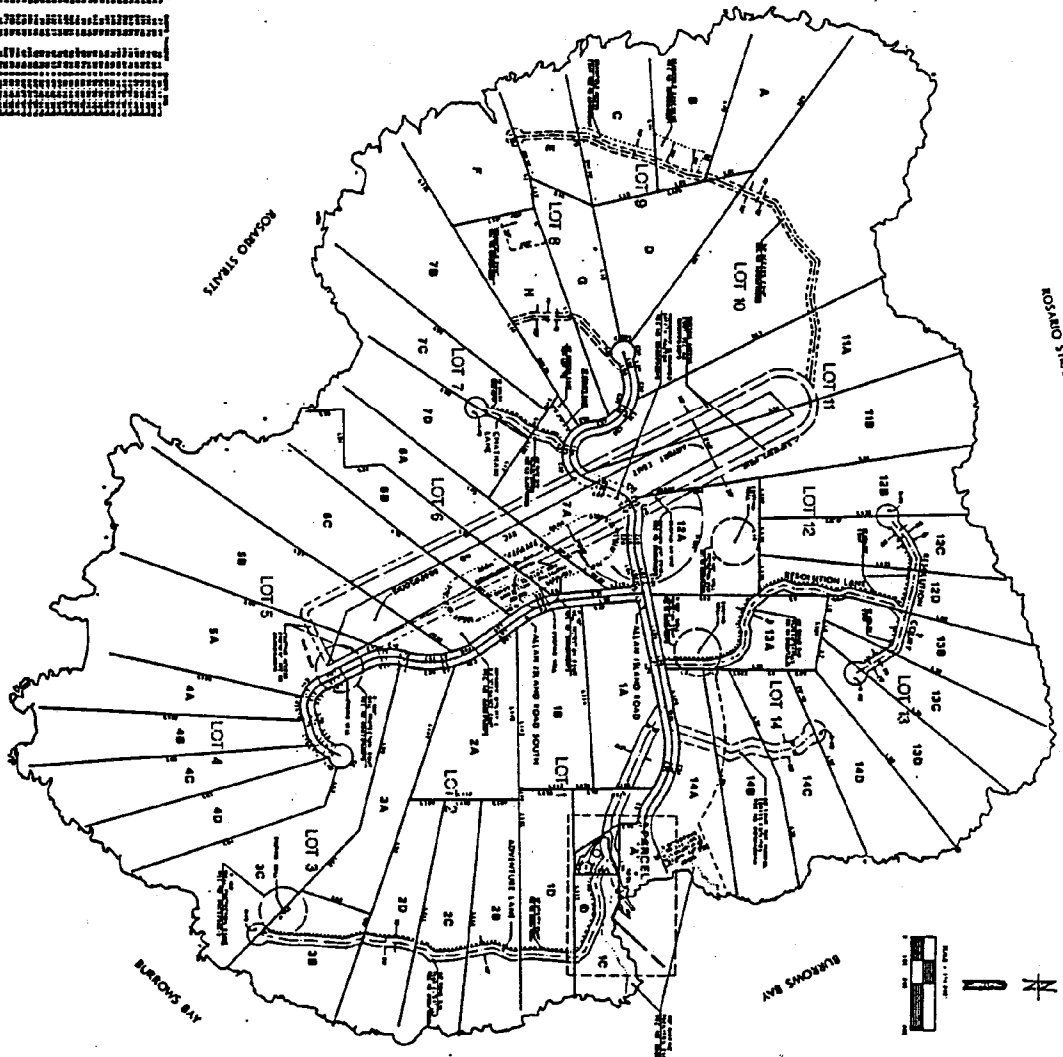
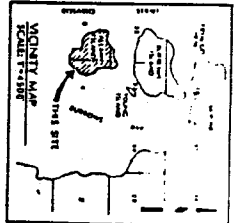
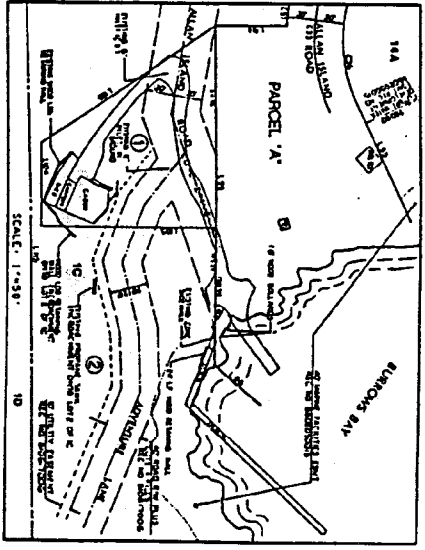


1. The lots shown on this map are subject to the provisions of the Skagit County Ordinance No. 10, which provides for the assessment and collection of a fee for the use of the lots for the purpose of providing for the maintenance and improvement of the lots.



1. The lots shown on this map are subject to the provisions of the Skagit County Ordinance No. 10, which provides for the assessment and collection of a fee for the use of the lots for the purpose of providing for the maintenance and improvement of the lots.



2. The lots shown on this map are subject to the provisions of the Skagit County Ordinance No. 10, which provides for the assessment and collection of a fee for the use of the lots for the purpose of providing for the maintenance and improvement of the lots.

otak
 1/1
 \$297

ALTA

PREPARED FOR:
 SACII & ASSOCIATES, INC.
 1010 W. GOLF COURSE DRIVE
 BIRCH BAY - BLAINE, WA 98220

ALLAN ISLAND A.L.T.A.
 SKAGIT COUNTY, WASH.



1. The lots shown on this map are subject to the provisions of the Skagit County Ordinance No. 10, which provides for the assessment and collection of a fee for the use of the lots for the purpose of providing for the maintenance and improvement of the lots.